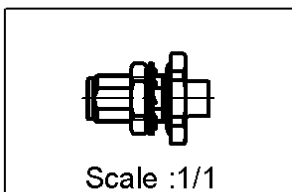
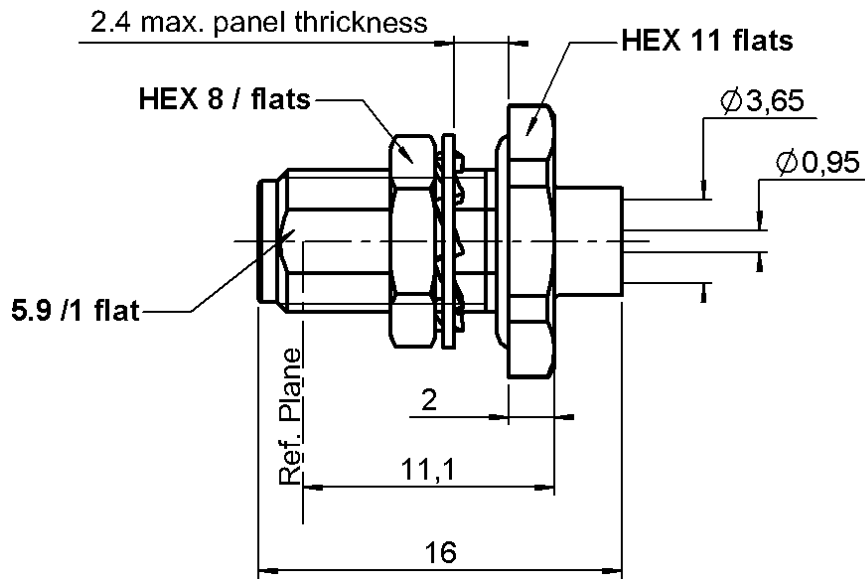


**STRAIGHT BULKHEAD JACK PANEL SEAL**

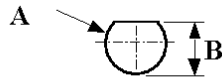
**R125.325.700**

**CABLE .141**

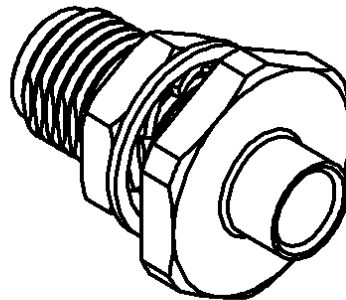
Series : SMA-27



PANEL CUT OUT



mm		
	Maxi	mini
A	6.5	6.4
B	6.15	6



All dimensions are in mm.



COMPONENTS	MATERIALS	PLATINGS ( $\mu\text{m}$ )
BODY	STAINLESS STEEL	GOLD 0.5 OVER NICKEL 2
CENTER CONTACT	BERYLLIUM COPPER	GOLD 1.3 OVER NICKEL 2
OUTER CONTACT		
INSULATOR	PTFE	
GASKET	SILICONE RUBBER	
OTHERS PARTS	BRASS	GOLD 0.2 OVER NICKEL 2
-	-	-
-	-	-

Issue : 0347 A

In the effort to improve our products, we reserve the right to make changes judged to be necessary.



**STRAIGHT BULKHEAD JACK PANEL SEAL**

**R125.325.700**

**CABLE .141**

Series : SMA-27

**PACKAGING**

Standard	Unit	Other
<b>1</b>	-	<b>Contact us</b>

**SPECIFICATION**

**CABLE ASSEMBLY**

Stripping	a	b	c	d	e	f
mm	3.17	0.00	0.00	0.00	0.00	0.00

**ELECTRICAL CHARACTERISTICS**

Assembly instruction : **Solder 01**

Recommended cable(s)  
RG 402  
KS 2

Characteristics indicated on this data sheet are those that can be achieved with the highest performance cable. Intrinsic limitations of the cable may diminish the performance of the assembly

Cable retention

- pull off **270 N mini**  
- torque **NA N.cm**

**MECHANICAL CHARACTERISTICS**

**TOOLING**

Part Number	Description	Hexagon
R282.120.010	SMA TOOLBOX	
R282.067.000	POINTER GAUGE	
R282.053.000	STRIPPING TOOL	
R282.740.000	SOLDERING MOUNTING	
R282.744.220	SOLDERING POSITIONER (C.CONTACT)	
R282.862.060	CONTROL GAUGE	pos. 62
R282.744.011	SOLDERING POSITIONER (BODY)	
R282.914.010	DIELETRIC RECESS GAUGE	
R282.915.010	DIELECTRIC RECESS TOOL	
R282.730.043	INSULATOR MOUNTING TOOL	

Impedance **50 Ω**  
Frequency **0-27 GHz**  
VSWR **1.05 + 0.008** x F(GHz) Maxi  
Insertion loss **0.03**  $\sqrt{F}$ (GHz) dB Maxi  
RF leakage **90** - F(GHz)) dB Maxi  
Voltage rating **500** Veff Maxi  
Dielectric withstanding voltage **1000** Veff mini  
Insulation resistance **5000** MΩ mini

Center contact retention  
Axial force – Mating end **NA N mini**  
Axial force – Opposite end **NA N mini**  
Torque **NA N.cm mini**

Recommended torque  
Mating **100 N.cm**  
Panel nut **150 N.cm**  
Clamp nut **NA N.cm**  
A/F clamp nut **0.000 mm**

Mating life **500 Cycles mini**  
Weight **3.448 g**

**ENVIRONMENTAL**

Operating temperature **-65/+105 °C**  
Hermetic seal **NA** Atm.cm3/s  
Panel leakage **NA**

**OTHERS CHARACTERISTICS**

Issue : 0347 A

In the effort to improve our products, we reserve the right to make changes judged to be necessary.

